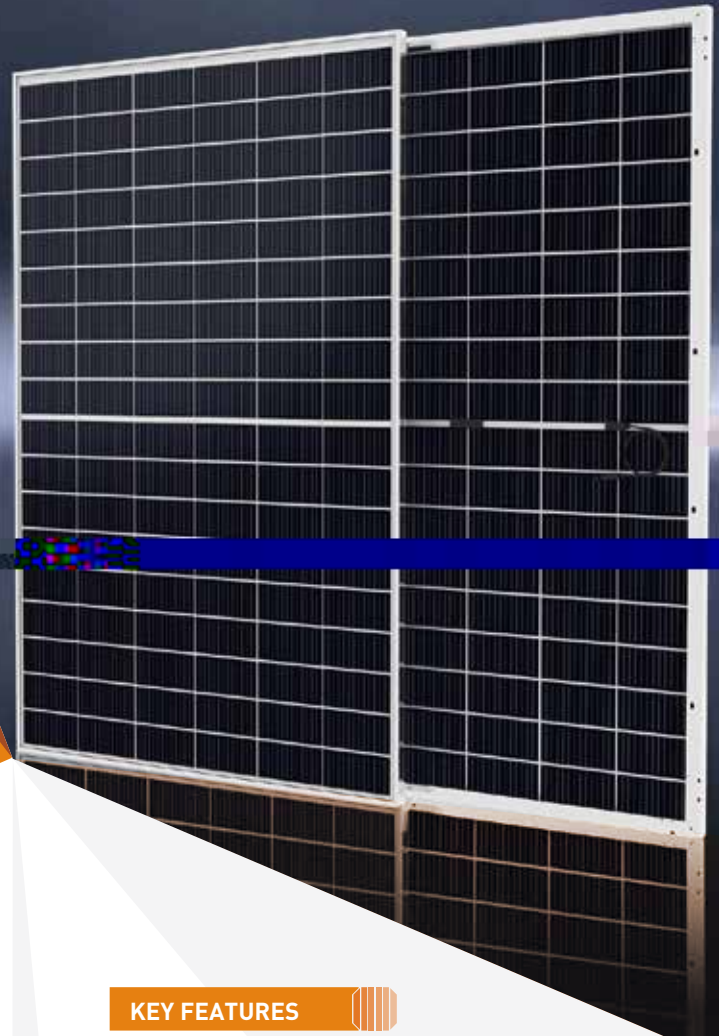


BIPRO

108-cell



SYSTEM & PRODUCT CERTIFICATES

-
-
-
-



PERFORMANCE WARRANTY

12 30



KEY FEATURES



12BB Half-cut Cell Technology



Industry Leading High Yield



Excellent Anti-PID Performance



Wider Application



IP68 Junction Box



ELECTRICAL CHARACTERISTICS

| Testing Condition | STC | NMOT | STC | NMOT | STC | NMOT | STC | NMOT | STC | NMOT |
|-------------------------------|-----|------|-----|------|-----|------|-----|------|-----|------|
| Maximum Power (Pmax/W) | | | | | | | | | | |
| Operating Voltage (Vmpp/V) | | | | | | | | | | |
| Operating Current (Impp/A) | | | | | | | | | | |
| Open-Circuit Voltage (Voc/V) | | | | | | | | | | |
| Short-Circuit Current (Isc/A) | | | | | | | | | | |
| Module Efficiency (%) | | | | | | | | | | |

STC: Irradiance 1000W/m², Spectra at AM1.5, Module Temperature 25 °C. Power output tolerance: 0~+5W, Test uncertainty for Pmax: ±3%
 NMOT: Irradiance 800W/m², Spectra at AM1.5, Ambient Temperature 20 °C, Wind speed 1m/s

REAR SIDE POWER GAIN(REFERENCE TO 545W FRONT)

| | | | | |
|-----------|--|--|--|--|
| Pmax gain | | | | |
| Pmax/W | | | | |
| Vmpp/V | | | | |
| Impp/A | | | | |
| Voc/V | | | | |
| Isc/A | | | | |

MECHANICAL CHARACTERISTICS

| | |
|-------------------|--|
| Cell Type | |
| No. of Cells | |
| Module Dimensions | |
| Weight | |
| Front Glass | |
| Back Glass | |
| Frame | |
| Junction Box | |
| Output Cables | |
| Connectors | |

APPLICATION CONDITIONS

| | |
|---------------------------|----|
| Maximum System Voltage | |
| Operating Temperature | |
| Maximum Series Fuse | |
| Safety Protection Class | II |
| Mechanical Load | |
| Refer. Bifaciality Factor | |

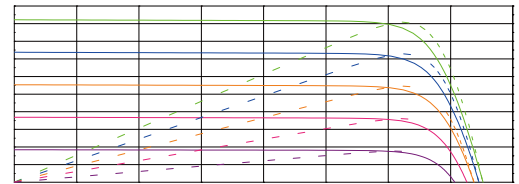
TEMPERATURE CHARACTERISTICS

| | |
|--|--|
| Temperature Coefficient of Pmax | |
| Temperature Coefficient of Voc | |
| Temperature Coefficient of Isc | |
| Nominal Module Operating Temperature(NMOT) | |

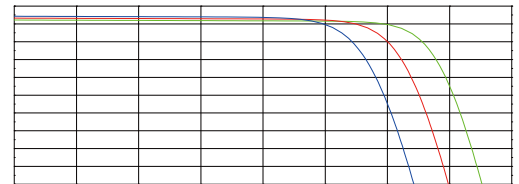
PACKING CONFIGURATION

| | |
|-----------------------------|--|
| Pieces Per Pallet | |
| Pieces Per Container(40'HQ) | |

I-V CURVE

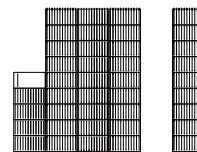


— — — — —



— — —

TECHNICAL DRAWINGS



The specification and key features described in this datasheet may deviate slightly and are not guaranteed. Due to ongoing innovation, R&D enhancement, Suzhou Talesun Solar Technologies Co., Ltd. reserves the right to make any adjustment to the information described herein at any time without notice. Please always obtain the most recent version of the datasheet which shall be duly incorporated into the binding contract made by the parties governing all transactions related to the purchase and sale of the products described herein.